

State of Wyoming Corner Record

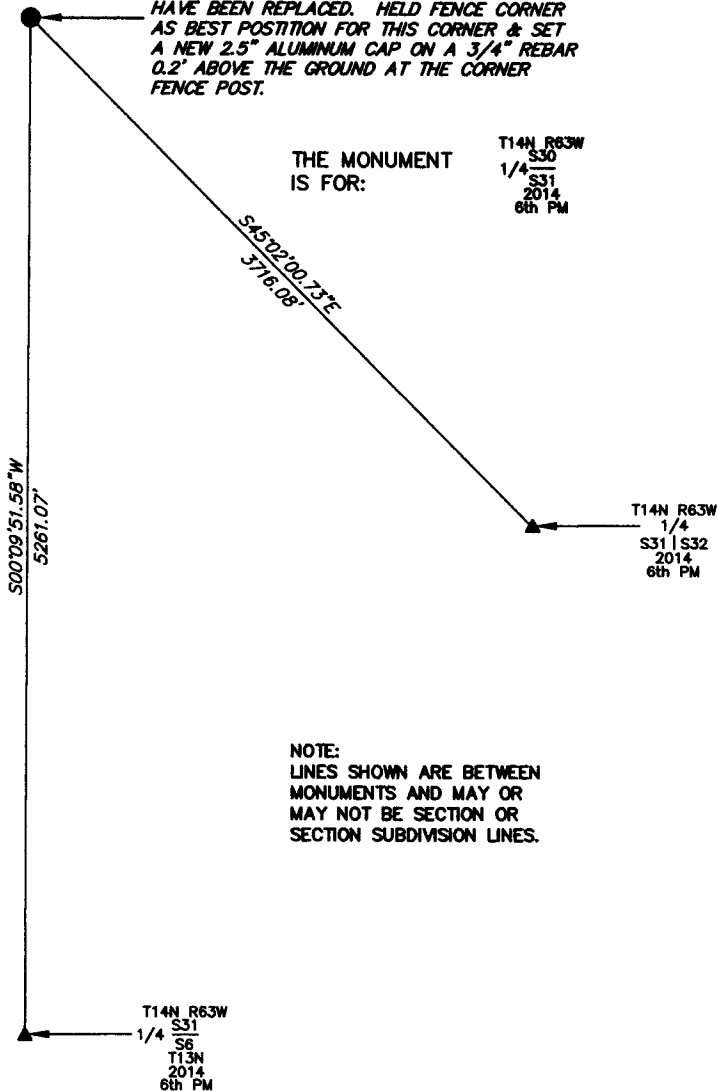
CORNER PERPETUATION AND FILING ACT.

Regulations of the Board of Registration for Professional Engineers and Land Surveyors.)

Reverse side of this form may be used if more space is needed.

Record of original survey and citation of source of historic information (if corner is lost or obliterated). Description of corner monumentation evidence found and/or monument and accessories established to perpetuate the location of this corner. Sketch of relative location of monument, accessories, and reference points with course and distance to adjacent corner(s) (if determined in this survey). Method and rationale for reestablishment of lost or obliterated corner.

1973 CORNER RECORD FOUND WITH A SET MARKED STONE THAT TIED IT TO A CORNER FENCE POST. STONE IS GONE & FENCES HAVE BEEN REPLACED. HELD FENCE CORNER AS BEST POSITION FOR THIS CORNER & SET A NEW 2.5" ALUMINUM CAP ON A 3/4" REBAR 0.2' ABOVE THE GROUND AT THE CORNER FENCE POST.



THE MONUMENT IS FOR:

T14N R63W
S30
1/4
S31
2014
6th PM

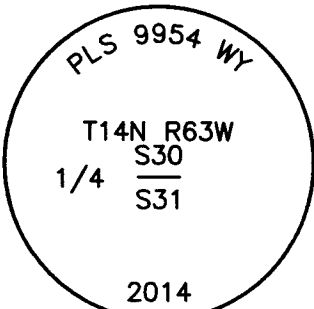
T14N R63W
1/4
S31 | S32
2014
6th PM

T14N R63W
S31
1/4
S6
T13N
2014
6th PM

NOTE:
LINES SHOWN ARE BETWEEN MONUMENTS AND MAY OR MAY NOT BE SECTION OR SECTION SUBDIVISION LINES.



SCALE 1"=1000'
(EXCEPT IN TRIVIAL CASES)
BEARINGS ARE RELATED TO WGS 84 WITH GPS OBSERVATIONS
DRAWN BY: SM
P.C. B. LOWREY
COUNTY: LARAMIE



CORNER MONUMENT SYMBOLS

- RECORD IS FOR THIS CORNER MONUMENT.
- ▲ A RELATED CORNER OR WC MONUMENT.

THE MONUMENT IS MARKED

Date of Field Work: 07/13/2014 Office Reference: _____

CROSS INDEX DIAGRAM

A	1	2	3	4	5	6	7	8	9	10	11	12	13	14	15	16	17	18	19	20	21	22	23	24	25
B																									
C			6		5			4						3											
D																									
E																									
F																									
G			7		8			9						10											
H																									
J																									
K																									
L			18		17			16						15											
M																									
N																									
O																									
P			19		20			21						22											
Q																									
R																									
S																									
T			30		29			28						27											
U																									
V																									
W																									
X			31		32			33						34											
Y																									
Z																									

Firm/Agency, Address

UELS, LLC

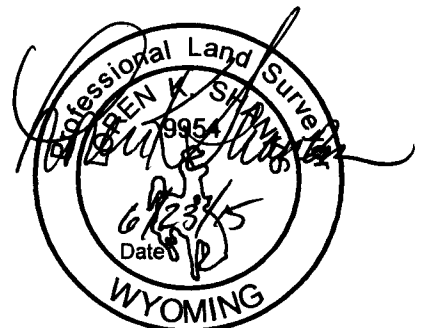
85 South 200 East

Vernal, Utah 84078

Telephone Number: 435-789-1017

This corner record was prepared by me or under my direction and supervision.

SEAL & SIGNATURE



REC# #: 670082
RECORDED 9/22/2015 AT 10:40 AM BK# 2465 PG# 90
Debra K. Lathrop, CLERK OF LARAMIE COUNTY, WY PAGE 1 OF 1